

# CSRS-PPP 2.32.0 (2020-03-31)



SparkFun-9Hrs-201014\_151512.obs

<b>Data Start</b>	<b>Data End</b>	<b>Duration of Observations</b>
2020-10-14 15:15:33.00	2020-10-15 05:58:56.00	14:43:23
<b>Processing Time</b>		<b>Product Type</b>
16:27:26 UTC 2020/10/15		NRCan Ultra-rapid
<b>Observations</b>	<b>Frequency</b>	<b>Mode</b>
Phase and Code	Double	Static
<b>Elevation Cut-Off</b>	<b>Rejected Epochs</b>	<b>Estimation Steps</b>
7.5 degrees	0.00 %	1.00 sec
<b>Antenna Model</b>	<b>APC to ARP</b>	<b>ARP to Marker</b>
Unknown	Unknown	H:0.000m / E:0.000m / N:0.000m

(APC = antenna phase center; ARP = antenna reference point)

## Estimated Position for SparkFun-9Hrs-201014\_151512.obs

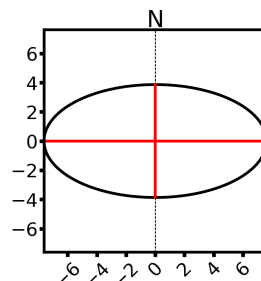
	Latitude (+n)	Longitude (+e)	Ell. Height
<b>ITRF14 (2020.7)</b>	40° 5' 25.07102"	-105° 11' 6.28439"	1560.238 m
<b>Sigmas(95%)</b>	0.003 m	0.006 m	0.012 m
<b>A priori*</b>	40° 5' 25.09809"	-105° 11' 6.32894"	1563.223 m
<b>Estimated – A priori</b>	-0.835 m	1.055 m	-2.985 m

**Orthometric Height  
CGVD2013  
(CGG2013a)**

1576.844 m

(click for height reference information)

**95% Error Ellipse (mm)**  
 semi-major: 8 mm  
 semi-minor: 4 mm  
 semi-major azimuth: -89° 0' 0.03"



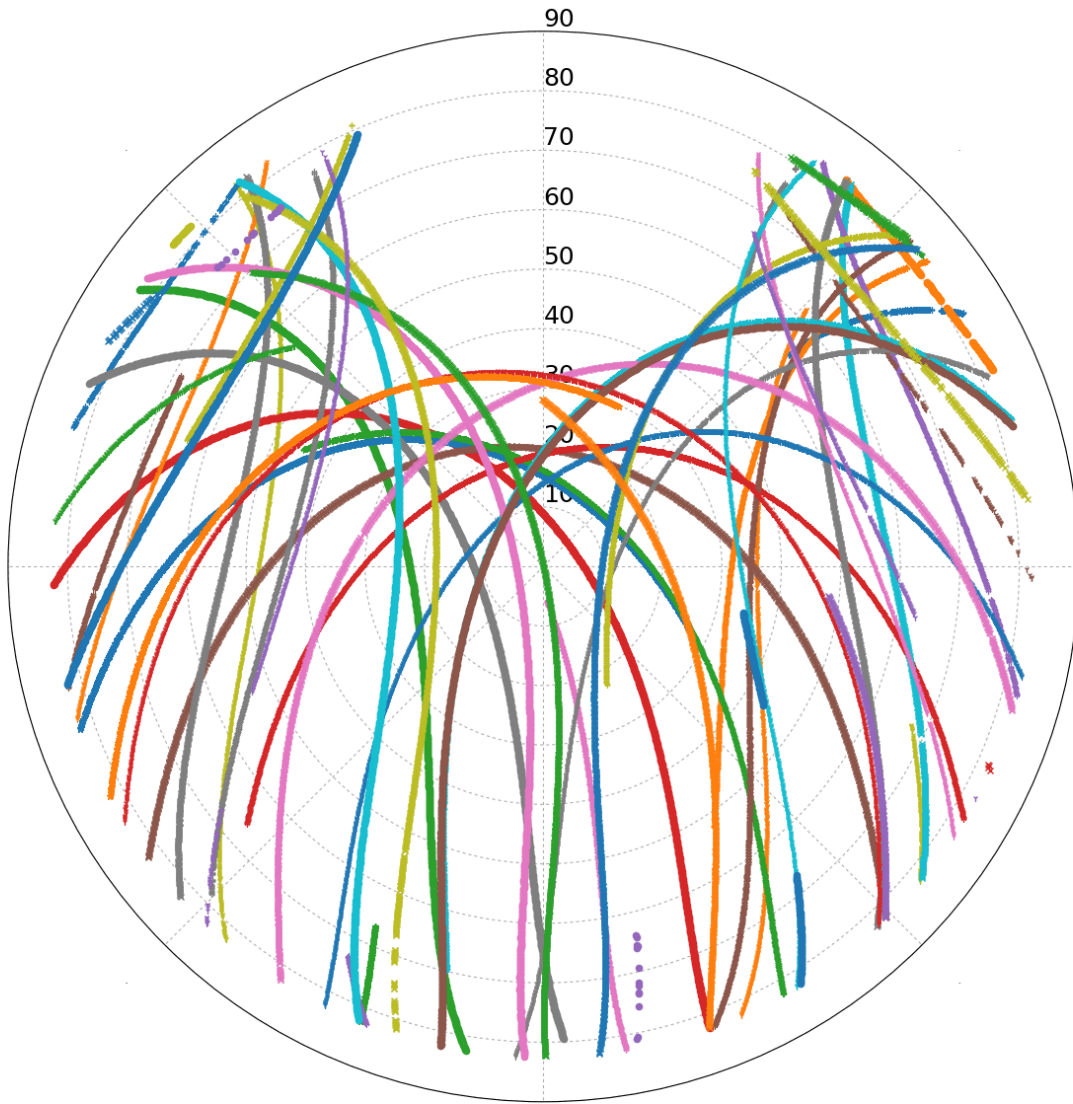
**UTM (North)  
Zone 13**

4437795.848 m (N)  
484222.537 m (E)

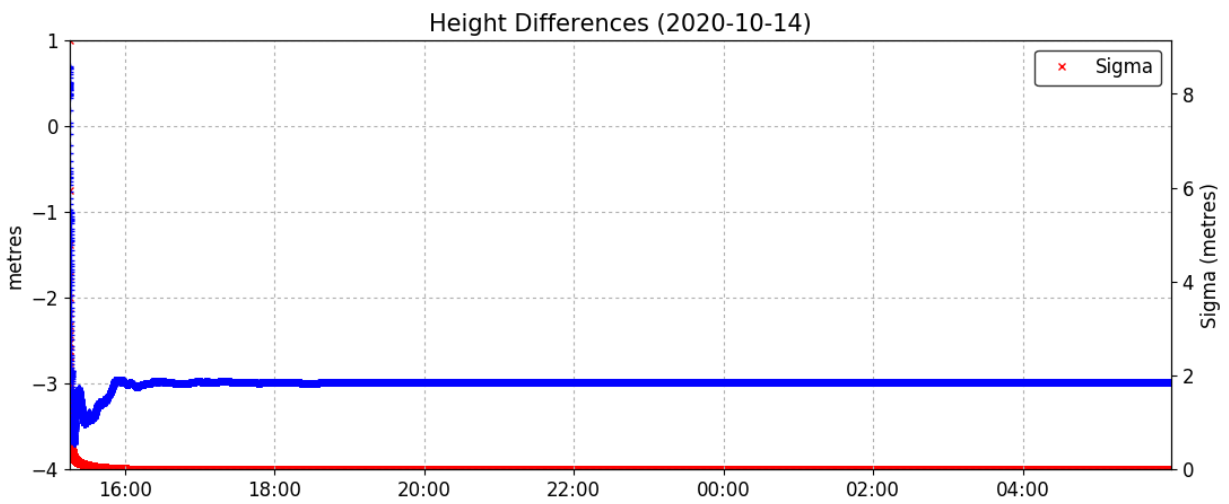
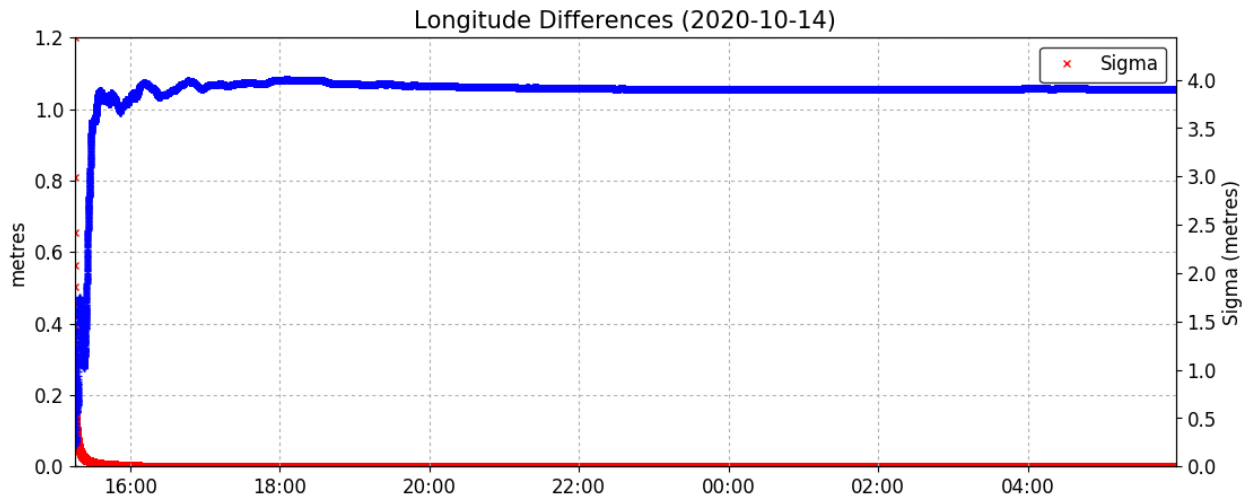
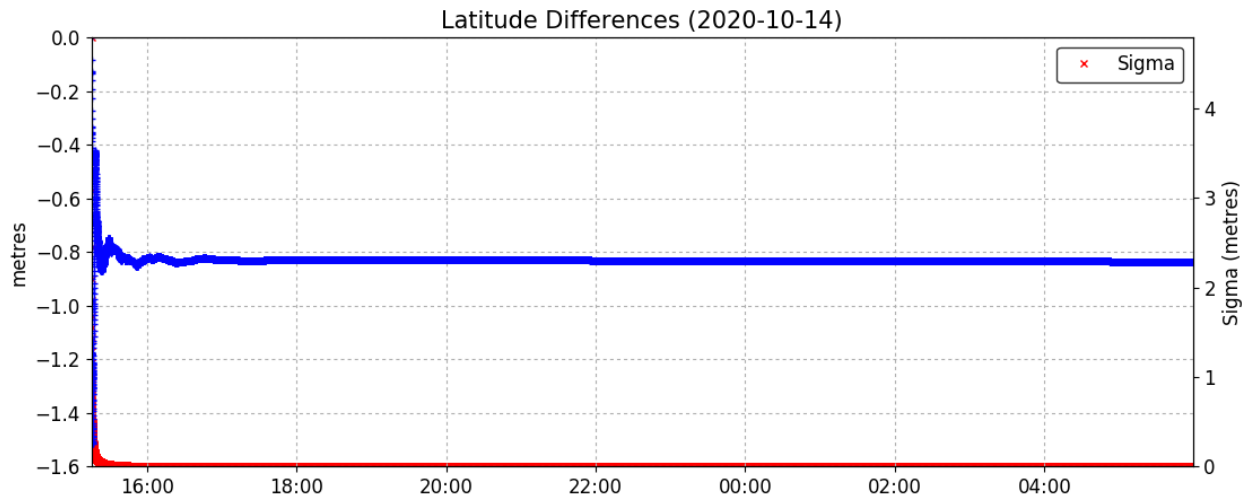
Scale Factors  
0.99960306 (point)  
0.99935846 (combined)

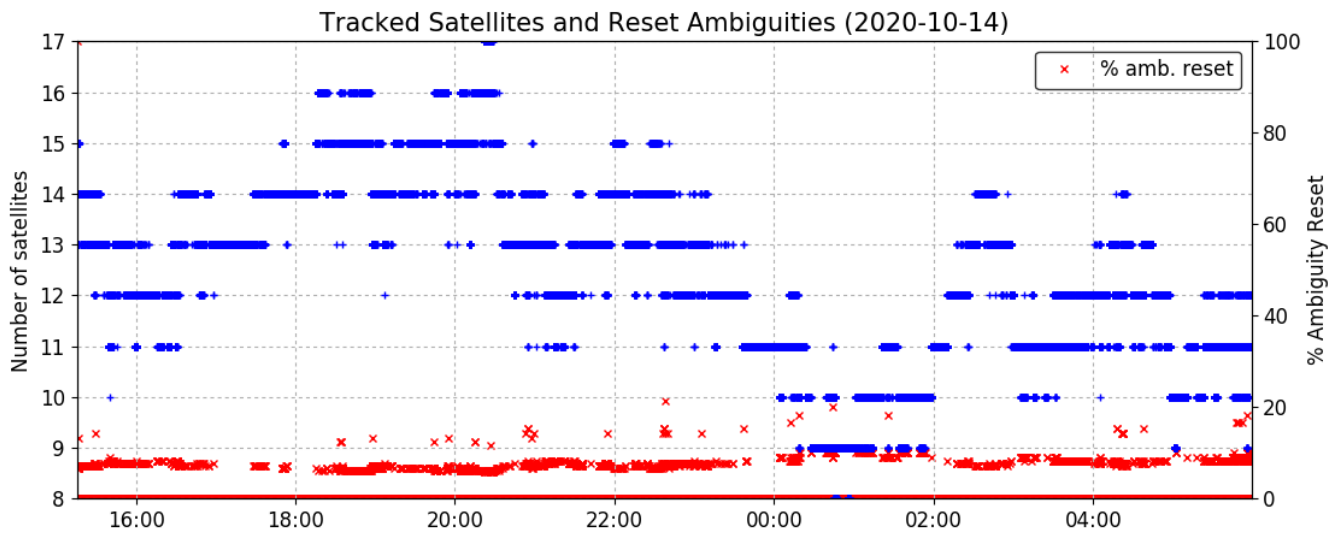
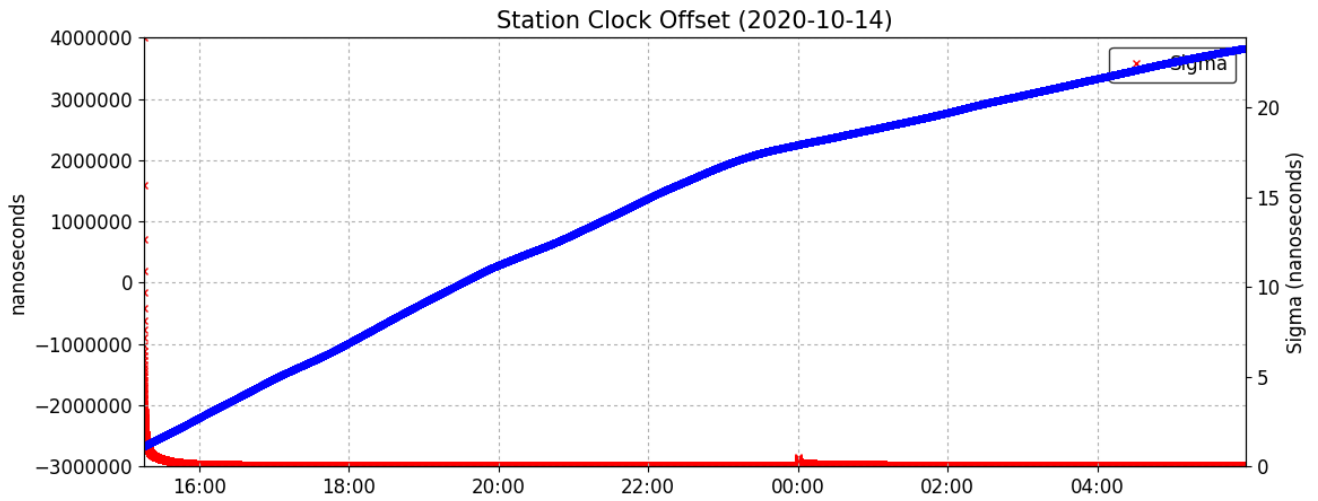
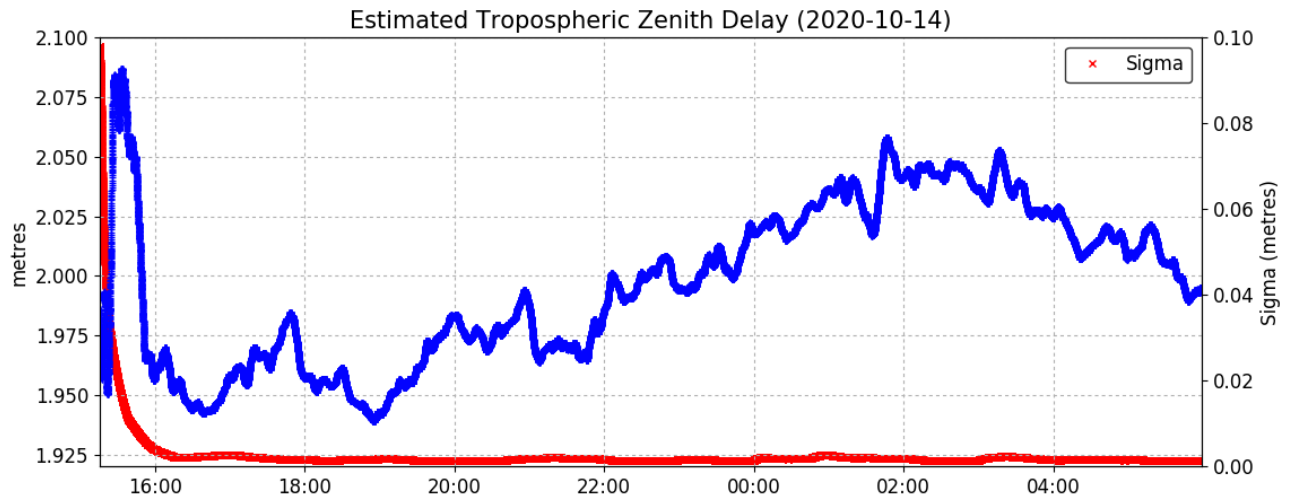
\*(Coordinates from a code solution used as a priori position)

Satellite Sky Distribution  
 Note: The sampling interval of this plot is 20.0 sec

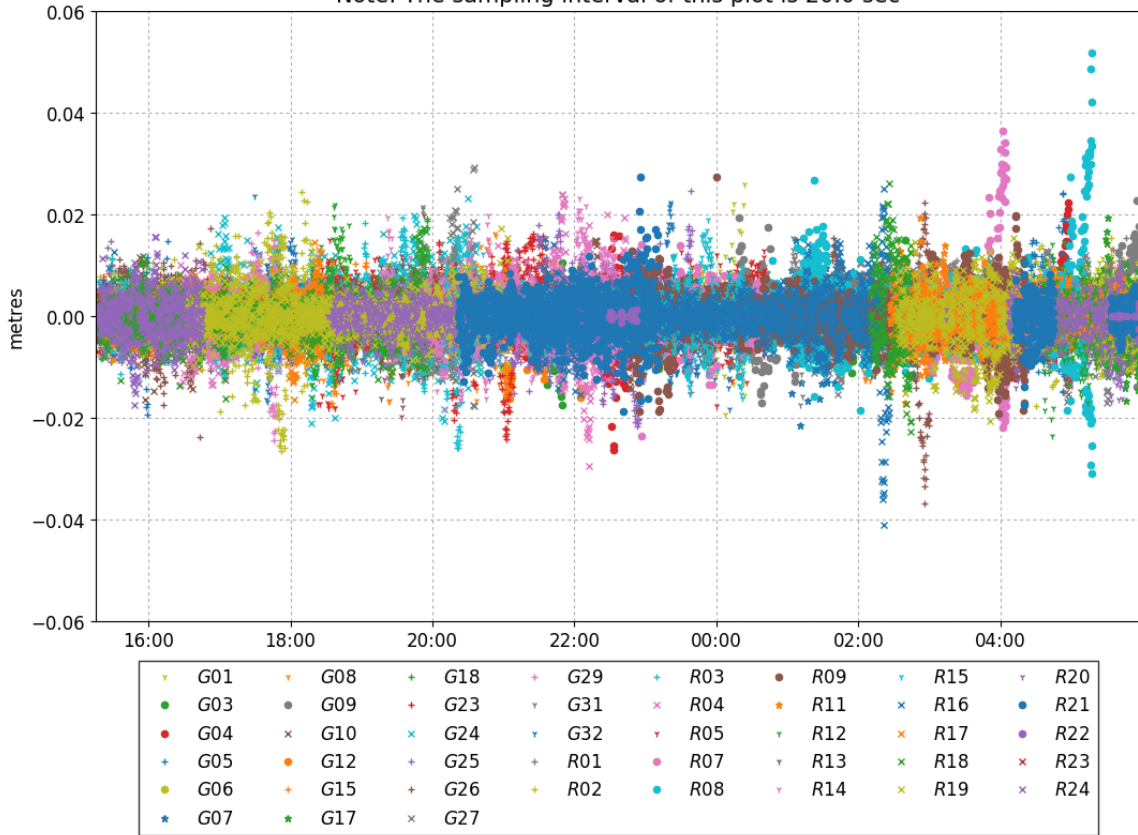


▽	G01	×	G10	+	G25	+	R02	*	R11	×	R18
●	G03	●	G12	+	G26	+	R03	▽	R12	×	R19
●	G04	+	G15	×	G27	×	R04	▽	R13	▽	R20
+	G05	+	G17	+	G29	▽	R05	▽	R14	●	R21
●	G06	+	G18	▽	G31	+	R07	▽	R15	●	R22
*	G07	+	G23	▽	G32	●	R08	×	R16	×	R23
▽	G08	×	G24	+	R01	●	R09	×	R17	×	R24
●	G09										

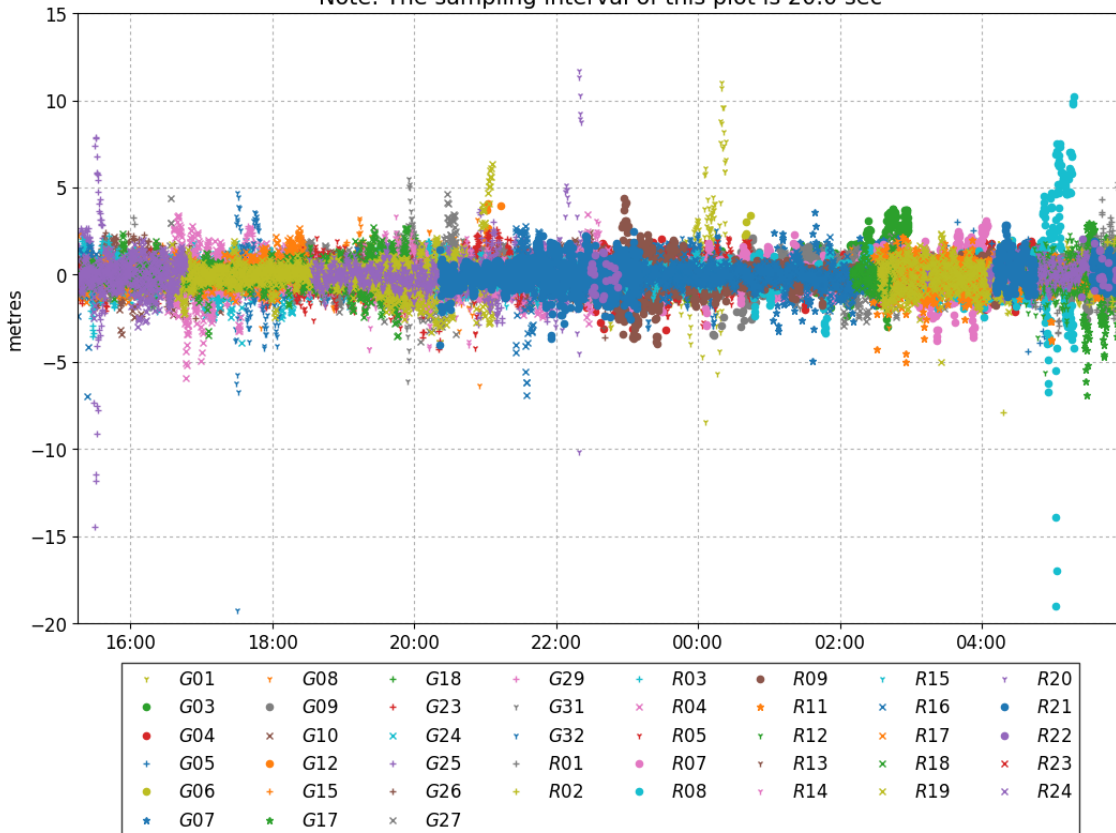




Carrier-Phase Residuals (2020-10-14)  
 Note: The sampling interval of this plot is 20.0 sec



Pseudo-Range Residuals (2020-10-14)  
 Note: The sampling interval of this plot is 20.0 sec



**~~~ Disclaimer ~~~**

**Natural Resources Canada does not assume any liability deemed to have been caused directly or indirectly by any content of its CSRS-PPP online positioning service.**

**If you have any questions, please feel free to contact:**

**Geodetic Integrated Services  
Canadian Geodetic Survey  
Surveyor General Branch  
Natural Resources Canada  
Government of Canada  
588 Booth Street, Room 334  
Ottawa, Ontario K1A 0Y7  
Phone: 343-292-6617**

**Email: [nrcan.geodeticinformation-informationgeodesique.rncan@canada.ca](mailto:nrcan.geodeticinformation-informationgeodesique.rncan@canada.ca)**



**Natural Resources  
Canada**

**Ressources naturelles  
Canada**

**Canada**